

# AVNET EMBEDDED SPECIFICATION.

**Datasheet**  
Citizen  
CT-S601

## Top of the class More features for reliable printing



**CT-S601**  
(available in black or white)

### LED operation panel

The three colour LED indicates the printer's status, types of errors and messages.

### Toolfree maintenance

Paper jam? No problem for the CT-S601. One hand grip and the cutter is released automatically. No tool is needed. Even if the long-life cutter ever needs to be exchanged. Thanks to it's Snap-In design this only takes 30 seconds.

### Internal Power Supply

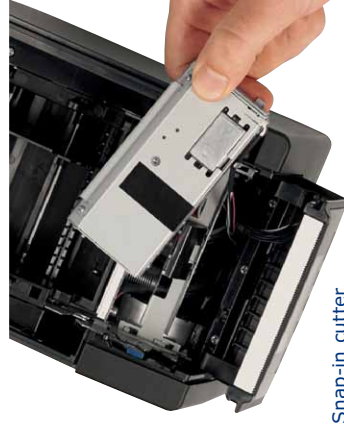
All 80mm POS printers from Citizen offer an internal power supply.

### Applications

- Receipt
- Coupon
- Ticket
- Daily Report
- Kitchen
- Delivery slip
- Barcode
- Weigh scales
- Kiosk
- Queue management



Operation panel



Snap-in cutter

### Accessories

#### Interface Connections

- Serial IF1-RS01
- Parallel IF1-PA01
- USB IF1-UB01
- Powered USB IF1-PU01
- USB incl. USB hub IF1-HU01
- Ethernet (SEH) IF1-ES01
- Ethernet (Standard) IF1-ET01

### Specifications

<b>Printing method</b>	Line thermal dot printing
<b>Printing width</b>	80mm/640 dots, 72mm/576 dots, 64mm/512 dots, 54.5mm/436 dots, 54mm/432 dots, 52.5mm/420 dots, 48mm/384 dots, 45mm/360 dots, 48.75mm/390 dots, 68.25mm/546 dots
<b>Dot pitch</b>	8 x 8 dots/mm (203 dpi)
<b>Printing speed</b>	Max. 200mm/s (print density 100%), 1600 dot-lines/s
<b>Number of columns</b>	83mm paper: Font A - 53, Font B - 71, Font C - 80, 80mm paper: Font A - 48, Font B - 64, Font C - 72, 60mm paper: Font A - 36, Font B - 48, Font C - 54, 58mm paper: Font A - 35, Font B - 46, Font C - 52
<b>Character size (WxH)</b>	Font A: 1.50 x 3.00mm (12 x 24 dots), Font B: 1.13 x 2.13mm (9 x 17 dots), Font C: 1.00 x 2.00mm (8 x 16 dots)
<b>Character table</b>	Alphanumeric, international, PC437/850/852/857/858/860/863/864/865/866/WPC1252/katakana/Thai code 18
<b>Barcode type</b>	UPC-A/E, JAN-13/8, Code 39, Code 128, CODABAR, Code 93, PDF417, QR Code
<b>Logo registration/print</b>	384 KB (capable of storing user-defined characters and logos)
<b>Line spacing</b>	4.23mm (1/6 inch), can be set by command
<b>Paper</b>	83mm/80mm/60mm/58mm (all +/-1mm)
<b>Diameter</b>	maximum 83mm
<b>Thickness</b>	65-75µm (core tube diameter: inner 12mm/outer 18mm)
<b>Recommended Paper</b>	75-150µm (core tube diameter: inner 25.4mm/outer 32mm) TF-50KS-E-2D from Nippon Paper, PD150R or PD160R from Ohji Paper, PA220AG, HP220A, HP220AB-1, F230AA, P220AB, or PB670 (2-color paper) from Mitsubishi Paper
<b>Interface</b>	Serial (RS-232C compliant), parallel (IEEE 1284 compliant), USB, USB with hub, Ethernet, powered USB
<b>Input buffer</b>	4K bytes/45 bytes
<b>Drawer kick-out</b>	2 drawers
<b>Operation panel</b>	3 LED's, Feed button
<b>Power supply</b>	Input: AC 100 to 240V, 50/60 Hz, 150 VA, Output: DC 24, 2.1 A
<b>Weight</b>	CT-S601S: Approx. 2 kg, CT-S601A: Approx. 1.6 kg
<b>Dimensions (W x D x H)</b>	CT-S601S: 145 x 192 x 148 mm, CT-S601A: 145 (W) x 192 (D) x 120 (H) mm
<b>Operating environment</b>	5 to 45°C, 10 to 90% RH (no condensation)
<b>Storage environment</b>	-20 to 60°C, 10 to 90% RH (no condensation)
<b>Reliability</b>	Print head life: 150km, 200 million pulses (at normal temperature and humidity using recommended paper), Auto cutter life: 2 million cuts (at normal temperature/humidity, using recommended paper and paper thickness)
<b>EMC and safety standards</b>	UL, C-UL, FCC Class A, TUV-Bauart, CE Marking

#### Type Classification

CT-S601S 3 RS E BK P  
1) \_\_\_\_\_ 2) 3) 4) 5) 6) 7)

**1) Model type**  
CT-S601

**2) Power supply**  
DC: No power source  
S: Built-in power supply type  
A: AC adapter type

**5) Market:**

- J: Japanese
- E: Europe/Asia
- U: North America
- C: China

**6) Body case color**

- WH: White
- BK: Black
- GR: Gray

**7) PNE sensor**

- No
- P: PNE sensor

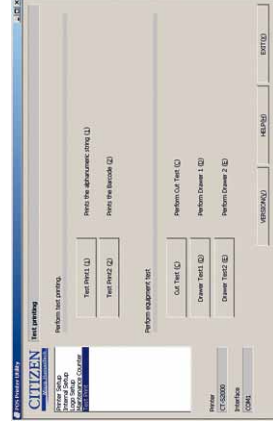
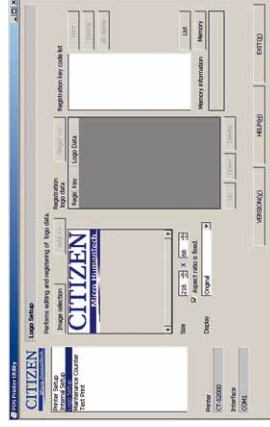
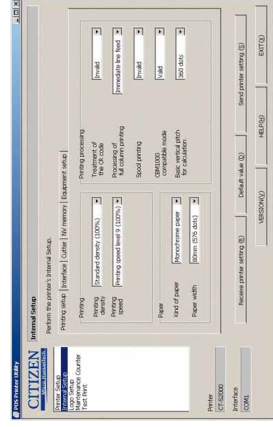
#### 4) Interface

- PA: Parallel
- RS: Serial RS-232C
- US: USB only
- UH: USB with hub
- ET: Ethernet (standard type)
- ES: Ethernet (multi-function type)
- UP: Powered USB

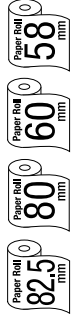


Exchangeable interfaces

### Customization Software



### Features



- 200mm / sec high-speed printing
- 82,5/80/60/58 mm selectable paper width
- Easy paper loading
- Auto retracting Cutter (full/partial)
- Snap-in cutter
- Operation panel with 3 LED's and feed button
- Built-in buzzer
- Top paper exit
- Paper roll capacity Ø 83mm
- Exchangeable interface cards
- Built-in AC adaptor
- Cash drawer kick-out
- Bitmap registration (NV memory)
- Barcode printing
- ESC/POS compatibility
- Page mode
- Two color printing
- Smoothing fonts
- Availalbe in white, black or dark grey (option)
- Driver: Win2000/XP/Vista/2003 Server, OPOS, Java POS, CUPS
- Utility software: Printer customization software, Receipt Layout Designer

## AVNET EMBEDDED OFFICES.

### DENMARK

Avnet Embedded  
Avnet Nortec A/S  
Ellekær 9  
2730 Herlev  
Phone: +45 3678 6250  
Fax: +45 3678 6255  
denmark@avnet-embedded.eu

### FINLAND

Avnet Embedded  
Avnet Nortec Oy  
Tiilenpolttajankuja 3 A B  
1720 Vantaa  
Phone: +358 207 499260  
Fax: +358 942 597446  
finland@avnet-embedded.eu

### FRANCE

Avnet Embedded  
Avnet EMG France SA  
Immeuble 154, Parc Chene 2  
5, allée du General Benoist  
69000 Bron  
Phone: +33 4 72 81 02 30  
Fax: +33 4 72 81 02 34  
axess-bron@avnet-embedded.eu

Avnet Embedded  
Avnet EMG France SA  
4, rue de la Couture  
Bâtiment Milan, BP 20209  
94518 Rungis Cedex  
Phone: +33 1 49 78 88 88  
Fax: +33 1 49 78 88 89  
axess-rungis@avnet-embedded.eu

Avnet Embedded  
Avnet EMG France SA  
ZA la Hallerais le Semiramis  
2, allée du Communal  
35770 Vern sur Seiche  
Phone: +33 2 99 77 37 02  
Fax: +33 2 99 77 33 38  
axess-rennes@avnet-embedded.eu

### GERMANY (AUSTRIA, CZECH REPUBLIC, HUNGARY, POLAND, SWITZERLAND)

Avnet Embedded  
Avnet EMG GmbH  
Gruber Straße 60c  
85586 Poing  
Phone: +49 8121 775 500  
Fax: +49 8121 775 550  
poing@avnet-embedded.eu

Avnet Embedded  
Avnet EMG GmbH  
Lötscher Weg 66  
41334 Nettetal  
Phone: +49 8121 775 500  
Fax: +49 8121 775 550  
nettetal@avnet-embedded.eu

### ITALY (PORTUGAL, SPAIN)

Avnet Embedded  
Avnet EMG Italy SRL  
Via Manzoni, 44  
20095 Cusano Milanino  
Phone: +39 02 66092 1  
Fax: +39 02 66092 498  
milano@avnet-embedded.eu

### NETHERLANDS (BELGIUM, LUXEMBOURG)

Avnet Embedded  
Avnet B.V.  
Takkebijsters 2  
4802 BL Breda  
Phone: +31 76 5722400  
Fax: +31 76 5722404  
benelux@avnet-embedded.eu

### SWEDEN (NORWAY)

Avnet Embedded  
Avnet Nortec AB  
Esplanaden 3 D  
172 67 Sundbyberg  
Phone: +46 8 564 725 50  
Fax: +46 8 760 01 10  
sweden@avnet-embedded.eu

### UNITED KINGDOM (IRELAND)

Avnet Embedded  
Avnet EMG Ltd.  
Pilgrims Court, 15/17 West Street  
Reigate, Surrey, RH2 9BL  
Phone: +44 1737 227800  
Fax: +44 1737 243872  
uk@avnet-embedded.eu

All trademarks and logos are the property of their respective owners. This document provides a brief overview only and is not intended to be complete or binding offer. Product information, including information related to a product's specifications, uses or conformance with legal or other requirements, is obtained by Avnet from its suppliers or other sources deemed reliable and is provided by Avnet on an „As Is“ basis. Avnet makes no representation as to the accuracy or completeness of the product information and Avnet disclaims all representations, warranties and liabilities under any theory with respect to the product information, including any implied warranties of merchantability, fitness for a particular purpose, title and/or non-refrangement. All product information is subject to change without notice.

### LOCAL AVNET EMBEDDED BUSINESSES:

**axess**  
technology

An Avnet Embedded Business

**tdc**

An Avnet Embedded Business

**trident**

An Avnet Embedded Business