

AVNET EMBEDDED SPECIFICATION.

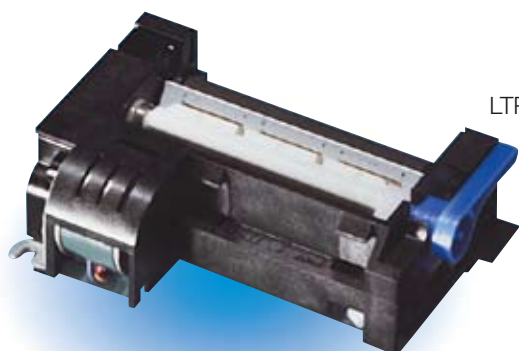
Datasheet
Seiko Instruments
LTP2000

LTP Series

LTP2000 SERIES PRINTERS

The LTP2000 Series answers the need for versatile, high-performance thermal printing in a compact unit. Available in models to handle paper widths of up to 112 mm, the LTP2000 Series combines high printing speeds with high print quality and quiet operation. The rugged and reliable LTP2000 Series features more than four million character lines, and with optional interface, allows for automatic paper loading. The LTP2000 Series offers performance and value for a wide range of popular applications, including measuring instruments, medical equipment, bar code, label and receipt printing, kiosks and gas tank level sensing devices.

- High resolution printing (8 dots/mm)
- High speed printing (90 mm/s attainable with LTP2242)
- Compact and light-weight
- Prints on label stock
- Two possible paper paths, straight or curved; thick paper printing is possible on straight path
- Paper can be automatically loaded when used in conjunction with the paper sensor
- Wide opening head for easy access

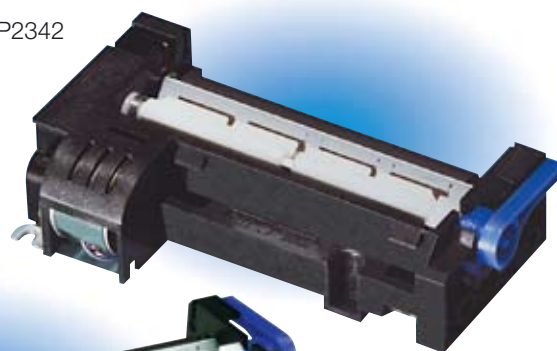


LTP2242



LTP2442

LTP2342



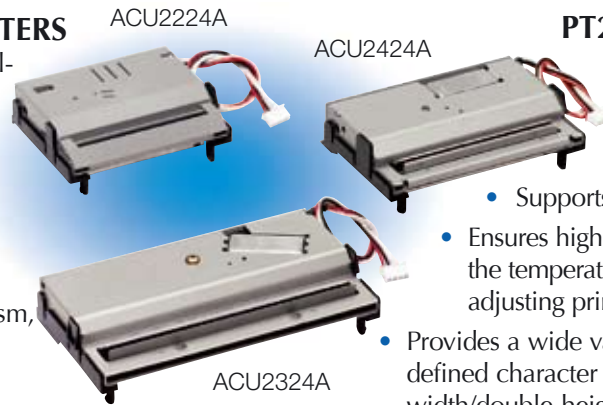
Model		LTP2242	LTP2342	LTP2442
Printing	Method	Thermal line dot system		
	No. of dots/line	432	576	832
	No. of characters/line	27	36	52
	Width (mm)	54	72	104
	Resolution	8 dots/mm		
	Paper feed pitch (mm)	0.125		
	Speed (mm/s)	90	75	
	Speed (cl/s)	18	15	
Detection	Head temperature	By thermistor		
	Paper out detection	By photo interrupter		
	Head up detection	By mechanical switch		
Dimensions (WxDxH) mm	85.2 x 61.4 x 27	106.4 x 61.4 x 27	138.2 x 61.4 x 27	
Mass (g)	Approx. 115	135	160	
Power supply	Operating voltage	24 VDC ± 2.4		
	Current consumption	1.6 A Max. @ 24 Vp (25% print ratio)	2.1 A Max. @ 24 Vp (25% print ratio)	3.1 A Max. @ 24 Vp (25% print ratio)
Service life	Pulse activation	100 million pulses or more (25% print ratio)		
	Abrasion resistance	50km or more		
Operating temperature (°C)	0 to 50			
Storage environment (°C)	-20 to 60			
Paper	Width (mm)	60 +0/-1	80 +0/-1	112 +0/-1
	Path	Straight or curved		
	Thickness (µm)	59 - 125		

CUTTERS, INTERFACE BOARD & CPU

ACU2000 SERIES AUTO CUTTERS

ACU2000 Series Auto Cutters are guillotine type cutters developed for the LTP2000 Series thermal line printer mechanism.

- Full or partial paper cut (on point remaining uncut) available by command input
- Easily mounts on printer mechanism, opens for easy maintenance



PT230P03 CPU

- Prints with less current using dynamic division control (via number of dots to be activated)

- Supports both parallel and serial input
- Ensures high-quality print by measuring the temperature and voltage, automatically adjusting print density
- Provides a wide variety of downloadable user-defined character functions including double-width/double-height, inverse print, underlining, and character spacing control

IF2303 INTERFACE BOARD

The IF2303 is an interface board used specifically for the LTP2000 Series. It is equipped with 8-bit parallel and serial TTL data input terminals. It brings printing functions into full play using a wide variety of characters and function commands.

- Supports bit image and character printing, auto paper loading
- Ruler line function enables ruler line and character integration

Model	ACU2224A	ACU2342A	ACU2442A
Cut method		Slide Type	
Cut width (mm)	63	85	116
Cut condition	Full or partial cut (leaving one point, 2 mm wide)		
Drive voltage (Vcc)	Motor	24 ± 2.4	
	Detector	5 ± 0.25	
Starting current (A)		1.2 max.	
Operating time (ms/cycle)		500 max.	
Cut frequency (cuts/minute)		30 max.	
Life (cuts)		300,000	
Dimensions (WxDxH) mm	79 x 66.5 x 16.5	100 x 66.5 x 17	126 x 69.3 x 17.5
Weight (g)	120	200	260
Operating temperature (°C)		0 to 50	
Storage temperature (°C)		-20 to 60	
Paper thickness (µm)		65 - 125	

Applicable mechanism	All LPT2000 Series
CPU	PT230P01
Input control method	8-bit parallel (modified Centronics) Serial (TTL level)
Character type	IBM compatible, extended graphics character set Downloaded, user-defined characters, Option Font
Dimensions (WxDxH) mm	90 x 100 x 22
Weight (g)	70
Operating voltage	Vcc=5 ± 0.5 V, Vp=24 ± 2.4V
Current consumption (Icc)	Max. 50 mA @ 5 VDC (standby) Max. 170 mA @ 5 VDC (printing)
Operating temperature (°C)	0 to 50
Storage temperature (°C)	-20 to 60

Applicable mechanism	All LTP2000 Series
Package form	128-pin QFP
Dimensions (WxDxH) mm	22 x 16 x 3.1
Configuration	C-MOS LSI
Input method	8-bit parallel (Centronics), USB, (TTL) serial
Operating voltage (Vcc)	5 VDC ± 10%
Operating frequency (MHz)	18.43 ± 0.5%



Seiko Instruments GmbH
Siemensstraße 9
63263 Neu-Isenburg
Germany
Telephone: 49-6102-297-0
Facsimile: 49-6102-297222

Specifications subject to change without notice.

AVNET EMBEDDED OFFICES.

DENMARK

Avnet Embedded
Avnet Nortec A/S
Ellekær 9
2730 Herlev
Phone: +45 3678 6250
Fax: +45 3678 6255
denmark@avnet-embedded.eu

FINLAND

Avnet Embedded
Avnet Nortec Oy
Tiilenpolttajankuja 3 A B
1720 Vantaa
Phone: +358 207 499260
Fax: +358 942 597446
finland@avnet-embedded.eu

FRANCE

Avnet Embedded
Avnet EMG France SA
Immeuble 154, Parc Chene 2
5, allée du General Benoist
69000 Bron
Phone: +33 4 72 81 02 30
Fax: +33 4 72 81 02 34
axess-bron@avnet-embedded.eu

Avnet Embedded
Avnet EMG France SA
6-8, rue Ambroise Croizat
ZAE Les Glaises
91127 Palaiseau Cedex
Phone: +33 1 64 47 29 29
Fax: +33 1 64 47 99 99
palaiseau@avnet-embedded.eu

Avnet Embedded
Avnet EMG France SA
ZA la Hallerais le Semiramis
2, allée du Communal
35770 Vern sur Seiche
Phone: +33 2 99 77 37 02
Fax: +33 2 99 77 33 38
axess-rennes@avnet-embedded.eu

GERMANY (AUSTRIA, CZECH REPUBLIC, HUNGARY, POLAND, SWITZERLAND)

Avnet Embedded
Avnet EMG GmbH
Gruber Straße 60c
85586 Poing
Phone: +49 8121 775 500
Fax: +49 8121 775 550
poing@avnet-embedded.eu

Avnet Embedded
Avnet EMG GmbH
Lötscher Weg 66
41334 Nettetal
Phone: +49 8121 775 500
Fax: +49 8121 775 550
nettetal@avnet-embedded.eu

ITALY (PORTUGAL, SPAIN)

Avnet Embedded
Avnet EMG Italy SRL
Via Manzoni, 44
20095 Cusano Milanino
Phone: +39 02 66092 1
Fax: +39 02 66092 498
milano@avnet-embedded.eu

NETHERLANDS (BELGIUM, LUXEMBOURG)

Avnet Embedded
Avnet B.V.
Takkebijsters 2
4802 BL Breda
Phone: +31 76 5722400
Fax: +31 76 5722404
benelux@avnet-embedded.eu

SWEDEN (NORWAY)

Avnet Embedded
Avnet Nortec AB
Esplanaden 3 D
172 67 Sundbyberg
Phone: +46 8 564 725 50
Fax: +46 8 760 01 10
sweden@avnet-embedded.eu

UNITED KINGDOM (IRELAND)

Avnet Embedded
Avnet EMG Ltd.
Pilgrims Court, 15/17 West Street
Reigate, Surrey, RH2 9BL
Phone: +44 1737 227800
Fax: +44 1737 243872
uk@avnet-embedded.eu

All trademarks and logos are the property of their respective owners. This document provides a brief overview only and is not intended to be complete or binding offer. Product information, including information related to a product's specifications, uses or conformance with legal or other requirements, is obtained by Avnet from its suppliers or other sources deemed reliable and is provided by Avnet on an "As Is" basis. Avnet makes no representation as to the accuracy or completeness of the product information and Avnet disclaims all representations, warranties and liabilities under any theory with respect to the product information, including any implied warranties of merchantability, fitness for a particular purpose, title and/or non-refrangement. All product information is subject to change without notice.

LOCAL AVNET EMBEDDED BUSINESSES:

axess
technology

An Avnet Embedded Business

tdc

An Avnet Embedded Business

trident

An Avnet Embedded Business